

RESEARCH

Product Guide

Blending food technology with life science for **clearly better** products.



Advancing Animal Research with More Effective and Ethical Hydration, Nutrition and Medication Delivery Solutions

Company Overview

ClearH2O[®] is a Maine-based life science company meeting the needs of leading industry researchers and breeders. A strategic partnership with food and nutritional scientists allows us to provide cost-effective solutions to address unmet market demands, while saving time and labor. ClearH2O[®] products are always consistent, eliminating nutrition and hydration variables in research.

ClearH2O[®] products are manufactured under stringent quality standards. Our commitment to quality is supported by an FDA approved HACCP facility that is inspected by independent third-party accredited bodies and agencies. Our quality program follows Safe Quality Food (SQF) accreditation requirements compliant with the Global Food Safety Initiative (GFSI) certification. All HydroGel[®], DietGel[®], MediGel[®], LabGel[®], FiberBites[®], AquaFeed[®] and AquaPak[®] products are tested for quality and receive a certificate of analysis.

ClearH2O[®]'s barrier packaged products are the only hydration, nutrition and medication delivery products that are commercially sterile inside and out. Our products are packaged in Tyvek[®] medical bags and are E-Beam irradiated. The result is easy to use individual cups and pouches, reducing the use of chemical sterilants, saving on labor cost and improving efficiency. Our knowledge of taste preferences promotes consumption, enhancing animal health and welfare. ClearH2O[®] products support better research outcomes with a high commitment to the ethical treatment of laboratory animals.

HydroGel[®] is the #1 choice of breeders worldwide for hydrating research animals in transit. DietGel[®] products are the #1 soft gel, nutritionally fortified, dietary supplement for general health, breeders and weanlings, and compromised or special needs animals. MediGel[®] products are fast becoming the preferred medication delivery method, reducing the need for pain management injections and improving therapeutic administration. LabGel[®] and FiberBites[®] continue to offer unique and effective enrichment for nonhuman primates.

ClearH₂O

ClearH₂O® Quick Reference Guide



APPLICATION / ANIMAL	PRODUCT DESCRIPTION	UNITS/CASE	PRODUCT NO.	PROCESS LEVEL	SHELF LIFE	STORAGE	PAGE
HYDRATION	HydroGel®, 2 oz	96 Cups/Case	70-01-5022	Irradiated	24 Months	Room Temperature	6, 7
	HydroGel®, 6 oz	70 Pouches/Case	70-01-1062	Irradiated	24 Months	Room Temperature	6, 7
	HydroGel®, 8 oz	55 Pouches/Case	70-01-1082	Irradiated	24 Months	Room Temperature	6, 7
	AquaPak®, 420 ml	30 Pouches/Case	70-40-1420	Acidified	24 Months	Room Temperature	8, 9
	AquaPak® Blue, 420 ml	30 Pouches/Case	70-50-1420	Acidified	24 Months	Room Temperature	8, 9
	AquaPak® CL, 420 ml*	30 Pouches/Case	70-60-1420	Chlorinated	24 Months	Room Temperature	8, 9
NUTRITION	DietGel® 76A, 2 oz	96 Cups/Case	72-07-5022	Irradiated	24 Months	Room Temperature	10, 11
	DietGel® 31M, 2 oz	96 Cups/Case	72-08-5022	Irradiated	24 Months	Room Temperature	12, 13
	DietGel® Boost, 2 oz	96 Cups/Case	72-04-5022	Irradiated	18 Months	Room Temperature	14, 15
	DietGel® Criticare, 4 oz	72 Cups/Case	72-05-5042	Irradiated	24 Months	Room Temperature	16, 17
	DietGel® Prenatal, 2 oz	96 Cups/Case	69-503-02	Irradiated	24 Months	Room Temperature	18, 19
	DietGel® Recovery, 2 oz	96 Cups/Case	72-06-5022	Irradiated	24 Months	Room Temperature	20, 21
	DietGel® 93M, 2 oz	96 Cups/Case	72-10-6000	Irradiated	24 Months	Room Temperature	22, 23
	DietGel® GEM, 2 oz	96 Cups/Case	72-12-5022	Irradiated	18 Months	Room Temperature	24, 25
	AquaFeed® Z, 175g	33 Pouches/Case	60-01-1190	Ultra-Pasteurized	12 Months	Room Temperature	26, 27
	LabGel® Banana, 8 oz	55 Pouches/Case	71-02-1081	Ultra-Pasteurized	18 Months	Room Temperature	28, 29
	LabGel® Primate, 8 oz	55 Pouches/Case	71-09-1081	Ultra-Pasteurized	18 Months	Room Temperature	30, 31
	MED. DELIVERY	MediGel® Sucralose, 2 oz	96 Cups/Case	74-02-5022	Irradiated	24 Months	Room Temperature
ENRICHMENT	FiberBites®, 3.5 g gummy	1295 Drops/Case	73-01-2101	Human Grade	24 Months	Room Temperature	34, 35



* Special order, minimum quantities apply



HydroGel®

Hydration Supplement

HydroGel® is a non-wetting, commercially sterile water gel for animal hydration. 98% pure water. The industry standard for hydration during transportation.

Delivering Solutions

- Suitable for short or long transit shipping times
- Supplement for compromised, recovering, and weaning animals
- Alternative to water bottles and excellent emergency water source
- Helpful in transitioning animals to automated watering systems

Delivering Quality

- Commercially sterile inside and out
- Tyvek® medical packaging
- E-Beam irradiated
- Complies with quality standards as tested by an independent laboratory
- Certificate of analysis by manufactured lot
- Individually coded with lot and date of expiration

Instructions

- To be administered under the direction of a veterinarian
- Manufactured for use in research animals
- Dosage: 1 cup is designed for 5 mice over 2 days based on average size and consumption. Monitor intake.



HydroGel®

Nutritional Information per 100g

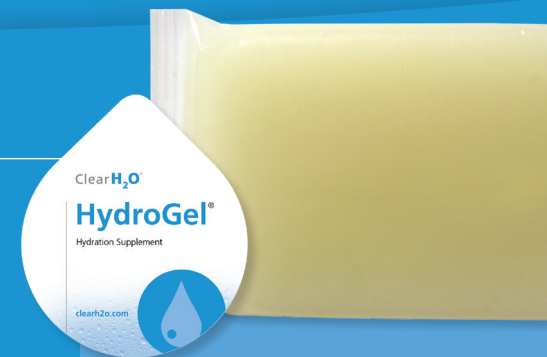
Calories	3.5 kcal
Protein	0.07 g
Carbohydrates	0.9 g
Dietary Fiber	0.9 g
Moisture	97-99 %
Calcium	20.4 mg
Phosphorus	23.9 mg
Potassium	25.1 mg
Sodium	23.6 mg

Ingredients

Purified Water, Hydrocolloids, Electrolyte Blend, Food Acids.

Shelf Life

Shelf life is 24 months, unopened at room temperature storage.



Ordering Information

HydroGel® - 70-01-5022

2 oz cup (56g)
96 cups per case
Barrier packed

HydroGel® - 70-01-1062

6 oz pouch (170g)
70 pouches per case
Barrier packed

HydroGel® - 70-01-1082

8 oz pouch (226g)
55 pouches per case
Barrier packed





AquaPak®

Purified Water

AquaPak® – Purified water for laboratory animals.

Delivering Solutions

- Convenient alternative to water bottles
- Excellent emergency water source
- Ready-to-use pouch saves labor, eliminates bottle filling and washing equipment
- 420 ml pouch volume provides extended water supply
- Pouch format fits most cage designs
- Acidified and chlorinated formulations available

Delivering Quality

- Commercially sterile
- Complies with quality standards as tested by an independent laboratory
- Certificate of analysis by manufactured lot
- Individually coded with lot and date of expiration



AquaPak®

Nutritional Information per 100g

Calories	0 %
Protein	0 %
Carbohydrates	0 %
Sugars	0 %
Dietary Fiber	0 %
Fat-total	0 %
Saturated Fat	0 %
Trans Fatty Acid	0 %
Cholesterol	0 %
Moisture	99-100 %
Calcium	0 %
Phosphorus	36.4 mg
Potassium	0 %
Sodium	0 %

Ingredients

70-40-1420, Clear: Purified Water, Food Acid.

70-50-1420, Blue: Purified Water, Food Acid, Blue #1.

70-60-1420, Chlorinated: Purified Water, Sodium Hypochlorite.

Shelf Life

Shelf life is 24 months, unopened at room temperature storage.



Ordering Information

**AquaPak®
70-40-1420**
420 ml pouch (acidified clear)
30 pouches/case

**AquaPak® Blue
70-50-1420**
420 ml pouch (acidified blue)
30 pouches/case

**AquaPak® CL*
70-60-1420**
420 ml pouch (chlorinated)
30 pouches/case



* Special order minimum quantities apply





DietGel® 76A

Dietary Supplement

DietGel® 76A is a nutritionally fortified dietary supplement, combining hydration and nutrition in a single serving. Formulated with purified ingredients, modeled on the AIN 76A maintenance diet formulation. It is flavor enhanced resulting in increased consumption.

Delivering Solutions

- Combines hydration and balanced nutrition
- Models AIN 76A nutrient profile
- Purified ingredients provide consistent nutrition
- Soft gel promotes consumption by compromised animals, including EAE, aging, neurological, surgical, cancer and immunodeficient models
- Superior alternative to mash diets

Delivering Quality

- Commercially sterile inside and out
- Tyvek® medical packaging
- E-Beam irradiated
- Complies with quality standards as tested by an independent laboratory
- Certificate of analysis by manufactured lot
- Individually coded with lot and date of expiration

Instructions

- To be administered under the direction of a veterinarian
- Manufactured for use in research animals
- Dosage: 1 cup is designed for 5 mice over 2 days based on average size and consumption. Monitor intake.



DietGel® 76A

Nutritional Information per 100g

	w/Animal Protein	w/Wheat Protein
Calories	106.0 kcal	120.5 kcal
Protein	5.0 g	4.1 g
Carbohydrates (total)	18.6 g	22.2 g
Sugars	15.3 g	17.9 g
Dietary Fiber	2.6 g	1.7 g
Fat (total)	1.4 g	1.8 g
Saturated Fat	0.2 g	0.2 g
Moisture	70-74 %	67-71 %
Calcium	269.0 mg	261.2 mg
Phosphorus	316.5 mg	257.6 mg
Potassium	353.5 mg	242.1 mg
Sodium	54.5 mg	39.1 mg

Ingredients - 72-07-5022

Purified Water, Molasses, Animal Protein (Milk), Vegetable Oil, Food Acids, Cane Sugar, Mineral Mix, Hydrocolloids, Corn Fiber, Vitamin Mix, Electrolyte Blend, L-Methionine.

Ingredients - 72-07-5022X

Purified Water, Molasses, Corn Syrup, Cane Sugar, Plant Protein (Wheat), Vegetable Oil, Mineral Mix, Hydrocolloids, Food Acids, Vitamin Mix, Corn Fiber, L-Methionine.

Shelf Life

Shelf life is 24 months, unopened at room temperature storage.



Ordering Information

DietGel® 76A - 72-07-5022
(w/Animal Protein)
2 oz cup (56g)
96 cups per case
Barrier packed

DietGel® 76A - 72-07-5022X
(w/Wheat Protein)
2 oz cup (56g)
96 cups per case
Barrier packed





DietGel® 31M

Dietary Supplement

DietGel® 31M is a nutritionally fortified dietary supplement, combining hydration and nutrition in a single serving. Modeled after the NIH 31 Modified formula and made with purified ingredients. The soft texture is ideal for compromised animals.

Delivering Solutions

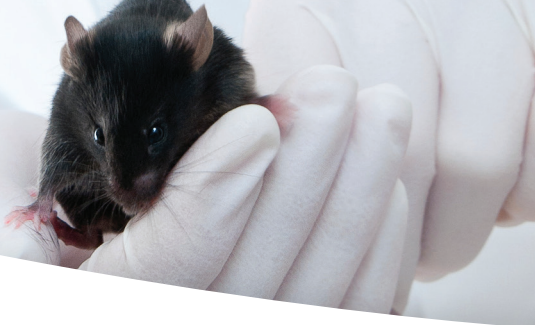
- Combines hydration and balanced nutrition
- Models NIH 31M nutrient profile
- Purified ingredients provide consistent nutrition
- Soft gel promotes consumption by compromised animals, including EAE, aging, neurological, surgical, cancer and immunodeficient models

Delivering Quality

- Commercially sterile inside and out
- Tyvek® medical packaging
- E-Beam irradiated
- Complies with quality standards as tested by an independent laboratory
- Certificate of analysis by manufactured lot
- Individually coded with lot and date of expiration

Instructions

- To be administered under the direction of a veterinarian
- Manufactured for use in research animals
- Dosage: 1 cup is designed for 5 mice over 2 days based on average size and consumption. Monitor intake.



DietGel® 31M

Nutritional Information per 100g

Calories	210.4 kcal
Protein	5.6 g
Carbohydrates - total	30.3 g
Sugars	20.5 g
Dietary Fiber	1.4 g
Fat – total	7.6 g
Saturated Fat	0.8 g
Moisture	53-56 %
Calcium	152.8 mg
Phosphorus	261.6 mg
Potassium	304.7 mg
Sodium	27.0 mg

Ingredients

Purified Water, Molasses, Pumpkin, Corn Syrup, Vegetable Oil, Plant Protein (Wheat), Food Acids, Hydrocolloids, Mineral Mix, Corn Fiber, Electrolyte Blend, Vitamin Mix.

Shelf Life

Shelf life is 24 months, unopened at room temperature storage.



Ordering Information

DietGel® 31M
72-08-5022
2 oz cup (56g)
96 cups per case
Barrier packed





DietGel® Boost

High Calorie Dietary Supplement

DietGel® Boost is a high-energy nutritional supplement that provides caloric support for weanlings, post surgical, debilitated, and aging animals.

Delivering Solutions

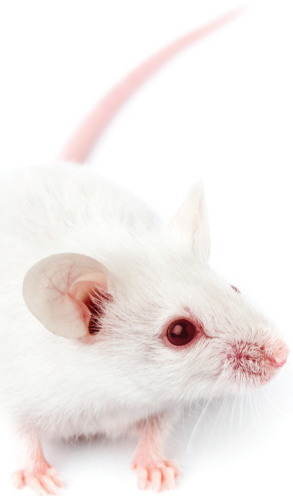
- Provides supplemental caloric and nutritional intake
- Increases pup survival rates
- Great taste promotes consumption
- Provides extra energy to aid in recovery
- Easily digested soft texture, suitable for oral gavage

Delivering Quality

- Commercially sterile inside and out
- Tyvek® medical packaging
- E-Beam irradiated
- Complies with quality standards as tested by an independent laboratory
- Certificate of analysis by manufactured lot
- Individually coded with lot and date of expiration

Instructions

- To be administered under the direction of a veterinarian
- Manufactured for use in research animals
- Dosage: 1 cup is designed for 5 mice over 2 days based on average size and consumption. Monitor intake.



DietGel® Boost

Nutritional Information per 100g

Calories	358.4 kcal
Protein	9.5 g
Carbohydrates - total	39.4 g
Sugars	26.7 g
Dietary Fiber	5.2 g
Fat - total	20.0 g
Saturated Fat	4.0 g
Moisture	25-30 %
Calcium	93.3 mg
Phosphorus	249.5 mg
Potassium	556.0 mg
Sodium	184.8 mg

Ingredients

Peanut Butter, Molasses, Corn Syrup, Purified Water, Pumpkin, Emulsifier, Food Acids, Vitamin Mix, Corn Fiber, Electrolyte Mix, Hydrocolloids.

Shelf Life

Shelf life is 18 months, unopened at room temperature storage. Product separation is natural, stir well to blend. (Similar to all natural peanut butter.)



Ordering Information

DietGel® Boost
72-04-5022
2 oz cup (56g)
96 cups per case
Barrier packed



HydroGel®



DietGel®



LabGel®



AquaPak®



MediGel®



FiberBites®



AquaFeed® Z



DietGel® Criticare

Dietary Supplement with Timothy Hay

DietGel® Criticare, formulated with Timothy Hay, is a nutritionally fortified supplement for herbivores that are unwilling to eat their normal diet due to illness, surgery, or malnutrition.

Delivering Solutions

- Suited for rabbits and guinea pigs
- Flavorful soft gel formulation promotes consumption
- Improves proper gut health and digestion, and aides recovery
- Ready to use - no mixing required

Delivering Quality

- Commercially sterile inside and out
- Tyvek® medical packaging
- E-Beam irradiated
- Complies with quality standards as tested by an independent laboratory
- Certificate of analysis by manufactured lot
- Individually coded with lot and date of expiration

Instructions

- To be administered under the direction of a veterinarian
- Manufactured for use in research animals
- Dosage: 1 cup per day based on average size and consumption. Monitor intake.



DietGel® Criticare

Nutritional Information per 100g

Calories	81.0 kcal
Protein	3.0 g
Carbohydrates - total	17.0 g
Sugars	10.8 g
Dietary Fiber	4.0 g
Fat – total	1.1 g
Moisture	70-75 %
Calcium	203.1 mg
Phosphorus	121.0 mg
Potassium	166.9 mg
Sodium	27.8 mg

Ingredients

Purified Water, Fruit Juice Concentrate, Plant Protein (Soybean), Pumpkin, Timothy Hay, Cellulose, Mineral Mix, Hydrocolloids, Vegetable Oil, Food Acids, Electrolyte Blend, Vitamin Mix.

Shelf Life

Shelf life is 24 months, unopened at room temperature storage.



Ordering Information

DietGel® Criticare
72-05-5042
4 oz cup (112g)
72 cups per case
Barrier packed



HydroGel®



DietGel®



LabGel®



AquaPak®



MediGel®



FiberBites®



AquaFeed® Z



DietGel® Prenatal



Dietary Supplement for Breeding Support

DietGel® Prenatal is a high protein supplement, combining hydration and nutrition in a single serving for lactating and breeding rodents. Formulated with purified ingredients and Omega 3 fatty acids.

Delivering Solutions

- High calorie supplement for breeding and lactating rodents
- Superior alternative to mash diets
- Excellent source of high quality protein and Omega 3 fatty acids
- Contains folic acid and iron for increased nutritional demands
- Contains flax seeds for foraging

Delivering Quality

- Commercially sterile inside and out
- Tyvek® medical packaging
- E-Beam irradiated
- Complies with quality standards as tested by an independent laboratory
- Certificate of analysis by manufactured lot
- Individually coded with lot and date of expiration

Instructions

- To be administered under the direction of a veterinarian
- Manufactured for use in research animals
- Dosage: 1 cup is designed for 5 mice over 2 days based on average size and consumption. Monitor intake.

DietGel® Prenatal

Nutritional Information per 100g

Calories	267.0 kcal
Protein	13.6 g
Carbohydrates (total)	19.1 g
Sugars	13.7 g
Dietary Fiber	2.0 g
Fat (total)	15.5 g
Saturated Fat	2.8 g
Omega 3 Fatty Acids	2.4 %
Moisture	46-50 %
Calcium	304.3 mg
Phosphorus	343.5 mg
Potassium	467.0 mg
Sodium	114.5 mg
Iron	2.0 mg
Folic Acid	50.1 mcg

Ingredients

Purified Water, Animal Protein (Fish, Milk), Molasses, Fish Oil, Flax Seeds, Vegetable Oil, Food Acids, Emulsifier, Mineral Mix, Hydrocolloids, Vitamin Mix, Corn Fiber, L-Methionine.

Shelf Life

Shelf life is 24 months, unopened at room temperature storage.



Ordering Information

DietGel® Prenatal
69-503-02
 2 oz cup (56g)
 96 cups per case
 Barrier packed





DietGel® Recovery

Hydration & Electrolyte Supplement

DietGel® Recovery is a flavor enhanced nutritionally fortified water gel including all six essential electrolytes that aids in the recovery of post surgical, weak or impaired rodents. Proven to increase survival rates in compromised animals. Formulated with purified ingredients that provides over 70% water, calories and electrolytes.

Delivering Solutions

- Hydrates, replenishes, supports recovery
- Increases post-surgical survival rate
- Increases pup survival rates
- Aids in overall health during long-term shipping

Delivering Quality

- Commercially sterile inside and out
- Tyvek® medical packaging
- E-Beam irradiated
- Complies with quality standards as tested by an independent laboratory
- Certificate of analysis by manufactured lot
- Individually coded with lot and date of expiration

Instructions

- To be administered under the direction of a veterinarian
- Manufactured for use in research animals
- Dosage: 1 cup is designed for 5 mice over 2 days based on average size and consumption. Monitor intake.

Please refer to pages 41 - 42 for recommendations on adding desired medications.



DietGel® Recovery

Nutritional Information per 100g

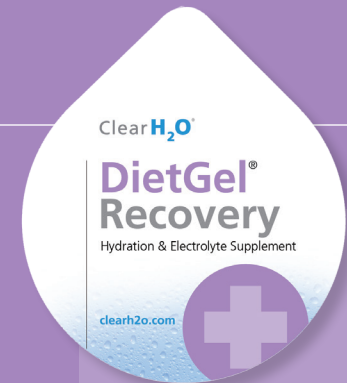
Calories	113.3 kcal
Protein	0.6 g
Carbohydrates (total)	23.4 g
Sugars	19.9 g
Dietary Fiber	1.3 g
Fat (total)	1.9 g
Saturated Fat	0.2 g
Moisture	71-75 %
Calcium	39.5 mg
Phosphorus	47.3 mg
Potassium	80.2 mg
Sodium	101.8 mg
Magnesium	0.6 mg
Chloride	114.1 mg

Ingredients

Purified Water, Cane Sugar, Corn Syrup, Molasses, Vegetable Oil, Hydrocolloids, Plant Protein (Wheat), Electrolyte Blend, Food Acids, Mineral Mix.

Shelf Life

Shelf life is 24 months, unopened at room temperature storage.



Ordering Information

DietGel® Recovery
72-06-5022
2 oz cup (56g)
96 cups per case
Barrier packed





DietGel® 93M

Moist Diet

DietGel® 93M is a complete maintenance diet containing a full spectrum of vitamins and minerals. Formulated with purified ingredients and modeled on the AIN 93M diet, it is flavor enhanced to promote consumption.

Delivering Solutions

- Complete maintenance diet combined with hydration in a soft gel
- Superior alternative to mash diets
- Reduces time and labor
- Recommended for aging mice, cancer models, and malocclusions

Delivering Quality

- Commercially sterile inside and out
- Tyvek® medical packaging
- E-Beam irradiated
- Complies with quality standards as tested by an independent laboratory
- Certificate of analysis by manufactured lot
- Individually coded with lot and date of expiration

Instructions

- To be administered under the direction of a veterinarian
- Manufactured for use in research animals
- Dosage: 1 cup is designed for 5 mice over 2 days based on average size and consumption. Monitor intake.



DietGel® 93M

Nutritional Information per 100g

Calories	138.2 kcal
Protein	7.0 g
Carbohydrates	25.2 g
Sugars	15.8 g
Dietary Fiber	3.1 g
Fat (total)	1.6 g
Saturated Fat	0.2 g
Moisture	60-64 %
Calcium	422.7 mg
Phosphorus	511.7 mg
Potassium	363.9 mg
Sodium	120.7 mg

Ingredients

Purified Water, Corn Syrup, Molasses, Animal Protein (Milk), Hydrocolloids, Modified Food Starch, Mineral Mix, Vegetable Oil, Food Acids, Vitamin Mix, Electrolyte Blend, L-Cystine.

Shelf Life

Shelf life is 24 months, unopened at room temperature storage.



Ordering Information

DietGel® 93M
72-10-6000
2 oz cup (56g)
96 cups per case
Barrier packed





DietGel® GEM

Dietary Supplement

DietGel® GEM is a nutritionally fortified dietary supplement designed to support the health of genetically modified rodent strains to thrive through the growth, reproduction, maintenance and ageing life stages. Formulated with purified ingredients with high milk protein and milk fat to duplicate the essential nutrients during lactation, DietGel® GEM is particularly effective at supporting the vulnerable weanling stage of GEM rodents. DietGel® GEM combines hydration and nutrition in a single serving, and is flavor enhanced to increase consumption.

Delivering Solutions

- Helps GEM rodents thrive through weaning, adulthood and ageing
- Supports pup rearing, reproduction and growth
- Contains high protein for healthy weight gain
- Soft texture for easy consumption

Delivering Quality

- Commercially sterile inside and out
- Tyvek® medical packaging
- E-Beam irradiated
- Complies with quality standards as tested by an independent laboratory
- Certificate of analysis by manufactured lot
- Individually coded with lot and date of expiration

Instructions

- To be administered under the direction of a veterinarian
- Manufactured for use in research animals
- Dosage: 1 cup is designed for 5 mice over 2 days based on average size and consumption. Monitor intake.



DietGel® GEM

Nutritional Information per 100g

Calories	262.3 kcal
Protein	12.6 g
Carbohydrates - total	19.0 g
Dietary Fiber	1.7 g
Fat - total	15.6 g
Moisture	46-51 %
Calcium	327.8 mg
Phosphorus	456.0 mg
Potassium	391.3 mg
Sodium	108.1 mg

Ingredients

Purified Water, Molasses, Vegetable Oil, Animal Protein (Fish, Milk), Cream Powder, Food Acids, Emulsifier, Mineral Mix, Corn Fiber, Vitamin Mix, Electrolyte Mix, L-Methionine.

Shelf Life

Shelf life is 18 months, unopened at room temperature storage.



Ordering Information

DietGel® GEM
72-12-5022
2 oz cup (56g)
96 cups per case
Barrier packed





AquaFeed® Z

The First Gel Diet Specifically Formulated for Zebrafish

AquaFeed® Z is a complete diet formulation based on the most up-to-date knowledge from zebrafish researchers integrated into a sustained delivery gel cube. AquaFeed® Z improves fish health and welfare by supporting uniform feeding for all fish, reducing competition and stress. Truly unique to the gel product format of AquaFeed® Z, is the physical property of being cut into a clean, consistent unit of measure.

Delivering Solutions

Nutrient Specific – Formulation based on nutrient requirements specific for zebrafish growth, reproduction, and maintenance.

Nutrient Utilization - Made with purified ingredients, including sustainable protein with high digestibility.

Natural Feeding – Gel cube properties provide for a longer feeding period and more natural grazing behavior, reducing stress and competition for food, resulting in improved fish welfare.

Consistent Unit of Measure – Designed to be cut into uniform 1 gram cubes for ease of clean and consistent feed administration.

Delivering Quality

- Purified Ingredients - No fillers, added starches, or binders.
- Sustainable protein sources
- Complies with quality standards as tested by an independent laboratory
- Certificate of analysis by manufactured lot
- Individually coded with lot and date of expiration
- Handling of the gel cube allows for clean application outside and inside the fish tank

Instructions

- Feeding dosage of 1 gram per 10 adult zebrafish
- To be administered under the direction of a veterinarian
- Manufactured for use in research animals

Feed	PER 1g AS FED	
	% Moisture	DM
AquaFeed® Z	74%	0.26

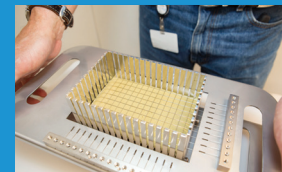
Life Stage	Weight (g)	SGR (%/d)	Feed Rate (%/d)	DM FEED VOLUME REQUIREMENT	
				g/10 fish/day	AF FEED VOLUME
Juvenile (30 dpf)	0.07	11.0%	20.0%	0.14	0.5
Sub-adult (56 dpf)	0.22	5.0%	10.0%	0.22	0.8
Adult (56+ dpf)	0.6	0.9%	5.0%	0.30	1.2
Adult (85 dpf)	0.8	0.5%	3.0%	0.24	0.9
Adult Repro (> 85 dpf)	0.8	0.5%	5.0%	0.40	1.5
AVG =				0.26	1.00

DM = Dry Matter AF = As Fed SGR = Specific Growth Rate

Packaging & Preparation



Unit: 175 gram pouch
Case: 33 Pouches per case
Storage: Room temperature

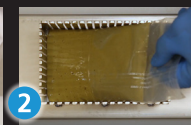


AquaFeed® Cutting Device

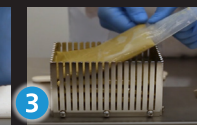
- Stainless steel, 2 components: base + wire cutting grid
- 1 pouch = 187 – 1 gram cubes
- 5 pouches = 935 cubes in one cut
- Convenient and easy to clean



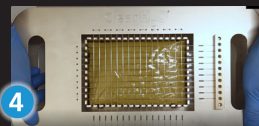
1 Open pouch w/ PouchMate.



2 Slide gel slab into the cutting hopper.



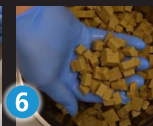
3 Stack the desired number of gel slabs into the hopper.



4 Align the wire cutting grid over the hopper cutting guides. Then, with even pressure, push the grid down through the stack of gel.



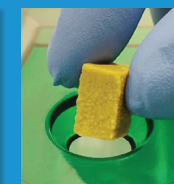
5 Holding the top grid and base together, invert the cutting device and empty the hopper into a container.



6 The AquaFeed® Z gel cubes are ready for administration.



Each resulting cube is 1 gram.



The physical properties of the cube allow for clean administration.

Nutritional Information per 100g

Calories	62.2 kcal
Protein	14.4 g
Carbohydrates - total	1.8 g
Sugars	0.5 g
Dietary Fiber	1.1 g
Fat – total	3.0 g
Saturated Fat	0.3 g
Cholesterol	2.9 mg
Water	72-76 %

Ingredients

Purified Water, Animal Protein (Fish, Milk), Vitamin Mix, Food Acids, Mineral Mix, Hydrocolloids, Vegetable Oil, Fish Oil, Betaine, Emulsifier, Electrolyte Blend, Mixed Tocopherols.

Shelf Life

Shelf life is 18 months, unopened at room temperature storage.



Ordering Information

AquaFeed® Z

60-01-1190

175g pouch

33 pouches per case





LabGel® Banana

Naturally Flavored Gel Providing Enrichment, Hydration and Medication Delivery

LabGel® Banana is a non-wetting naturally flavored gel, designed to provide enrichment and hydration. It is an excellent vehicle for medication delivery for nonhuman primates and other research animals.

Delivering Solutions

- Thermo-reversible gel supports various applications:
 - Use with enrichment devices
 - Delivery and flavor masking of oral medications
- Provides up to 93% water for efficient hydration
- No sugar added formulation for use with calorie restricted diets
- Flavor enhanced to promote acceptance and consumption

Delivering Quality

- Purified ingredients
- Complies with quality standards as tested by an independent laboratory
- Certificate of analysis by manufactured lot
- Individually coded with lot and date of expiration

Instructions

- To be administered under the direction of a veterinarian
- Manufactured for use in research animals

Please refer to page 42 for recommendations on adding desired medications.



LabGel® Banana

Nutritional Information per 100g

NO SUGAR ADDED

Calories	23.1 kcal
Protein	0.4 g
Carbohydrates (total)	4.5 g
Sugars	3.4 g
Dietary Fiber	1.0 g
Moisture	91-95 %
Calcium	25.4 mg
Phosphorus	36.7 mg
Potassium	99.7 mg
Sodium	28.3 mg

Ingredients

Purified Water, Banana, Hydrocolloids, Natural Flavor, Electrolyte Blend, Food Acids, Sucralose.

Shelf Life

Shelf life is 18 months, unopened at room temperature storage.



Ordering Information

LabGel® Banana
No Sugar Added
71-02-1081

8 oz pouch (226 g)
55 pouches per case





LabGel® Primate

Purified Dietary Supplement for Old and New World Primates

LabGel® Primate is a nutritionally fortified dietary supplement formulated with purified ingredients in a highly palatable firm gel designed for both Old World and New World primates.

Delivering Solutions

- Made with real banana puree and peanut butter
- High protein and fat formulation
- Fortified with Vitamin D and stabilized Vitamin C
- Added flax seeds and raisins for enrichment
- Flavor enhanced to promote consumption
- Suitable for all primates species
- Ready to use – no mixing or blending

Delivering Quality

- Superior alternative to can or dry supplements
- Efficient and easy portioning saves labor
- High temperature pasteurized for long term stability
- Complies with quality standards as tested by an independent laboratory
- Certificate of analysis by manufactured lot
- Individually coded with lot and date of expiration

Instructions

- To be administered under the direction of a veterinarian
- Manufactured for use in research animals

Please refer to page 42 for recommendations on adding desired medications.



LabGel® Primate

Nutritional Information per 100g

Calories	208.9 kcal
Protein	11.1 g
Carbohydrates (total)	30.9 g
Sugars	20.8 g
Dietary Fiber	1.8 g
Fat (total)	4.6 g
Moisture	46-50 %
Calcium	126.2 mg
Phosphorus	185.6 mg
Potassium	445.6 mg
Sodium	67.6 mg

Ingredients

Purified Water, Molasses, Banana Puree, Animal Protein (Fish, Milk), Peanut Butter, Plant Protein (Soy), Raisins, Vegetable Oil, Flax Seeds, Food Acids, Hydrocolloids, Natural Flavors, Emulsifier, Electrolyte Mix, L-Ascorbic Acid Phosphate, Corn Fiber, Mixed Tocopherols, Vitamin D3.

Shelf Life

Shelf life is 18 months, unopened at room temperature storage.



Ordering Information

LabGel® Primate
71-09-1081
8 oz pouch (226 g)
55 pouches per case





MediGel® Sucralose

Hydration Supplement for Medication Delivery

MediGel® Sucralose is a flavored, low calorie water gel, designed to administer medication for research animal applications.

Delivering Solutions

- Soft gel texture enhances consumption
- 99% purified water
- Replaces water bottle
- Low calorie sweetener masks medicinal taste
- Enhanced flexibility through in-house preparation and dosing

Delivering Quality

- Commercially sterile inside and out
- Tyvek® medical packaging
- E-Beam irradiated
- Complies with quality standards as tested by an independent laboratory
- Certificate of analysis by manufactured lot
- Individually coded with lot and date of expiration

Instructions

- Use as the sole hydration source during treatment
- To be administered under the direction of a veterinarian
- Dosage: 1 cup is designed for 5 mice over 2 days based on average size and consumption. Monitor intake.
- Manufactured for use in research animals
- Follow thermoreversible or hand mixing protocols

Please refer to page 41 for recommendations on adding desired medications.



MediGel® Sucralose

Nutritional Information per 100g

Calories	3.52 kcal
Carbohydrates	0.6 g
Dietary Fiber	0.6 g
Moisture	96-99 %
Calcium	13.4 mg
Phosphorus	26.7 mg
Potassium	27.6 mg
Sodium	22.5 mg

Ingredients

Purified Water, Hydrocolloids, Food Acids, Natural Flavor, Electrolyte Blend, Sucralose.

Shelf Life

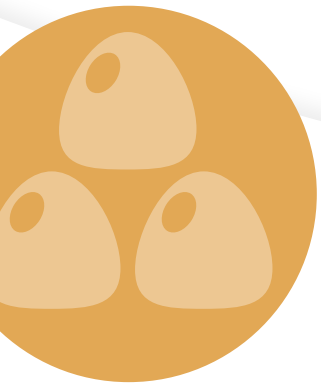
Shelf life is 24 months, unopened at room temperature storage.



Ordering Information

MediGel® Sucralose
74-02-5022
2 oz cup (56g)
96 cups per case
Barrier packed





FiberBites®

Fiber Fortified Enrichment Gummy for Nonhuman Primates

FiberBites® act as a prebiotic to nourish beneficial bacteria, promoting a healthy digestive tract while providing oral enrichment. Made with a natural source of inulin.

Delivering Solutions

- Great tasting natural flavors promote acceptance
- Convenient and easy to administer
- Low in calories
- Cost-effective supplemental fiber source

Delivering Quality

- Complies with quality standards as tested by an independent laboratory
- Certificate of analysis by manufactured lot
- Individually coded with lot and date of expiration

Instructions

- To be administered under the direction of a veterinarian
- Manufactured for use in research animals
- Recommended Dosage: 1 gummy/kg/day



FiberBites®

Nutritional Information per Gummy

Calories	6.67 kcal
Carbohydrates	3.0 g
Sugars	1.0 g
Dietary Fiber	1.6 g
Moisture	13-17 %
Sodium	3.3 mg

Ingredients

Chicory Root Fiber, Sugar, Water, Pectin, Natural Flavors, Citric Acid, Sodium Citrate, For Colors (Annatto, Elderberry Juice), Coconut oil, Carnauba Wax.

Shelf Life

Shelf life is 24 months unopened, at optimal storage conditions. Best if stored between 55° and 65°F (13° and 18° C). Do not freeze.

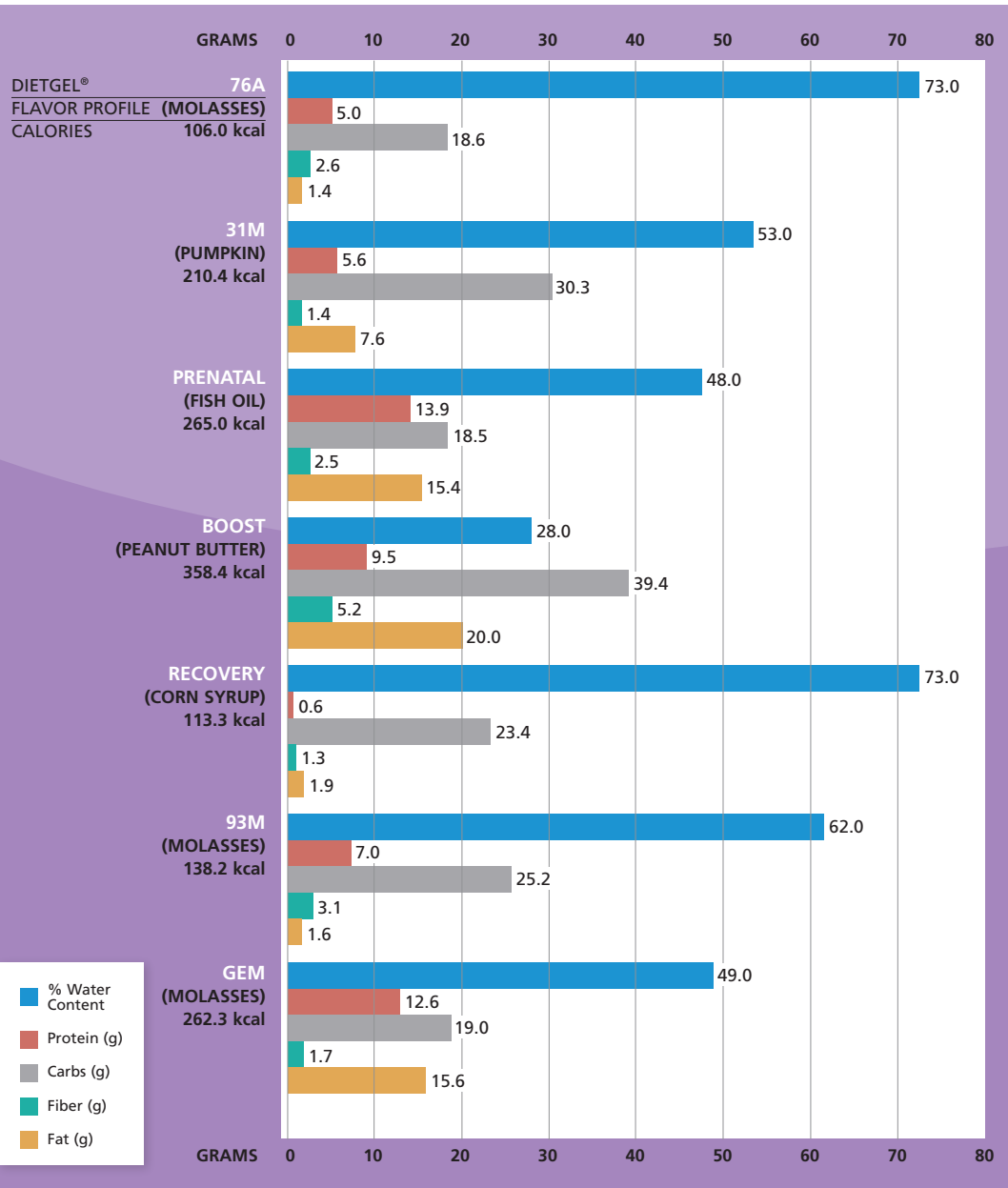
Ordering Information

FiberBites®
73-01-2101
3.5 gram gummy
10 lb case



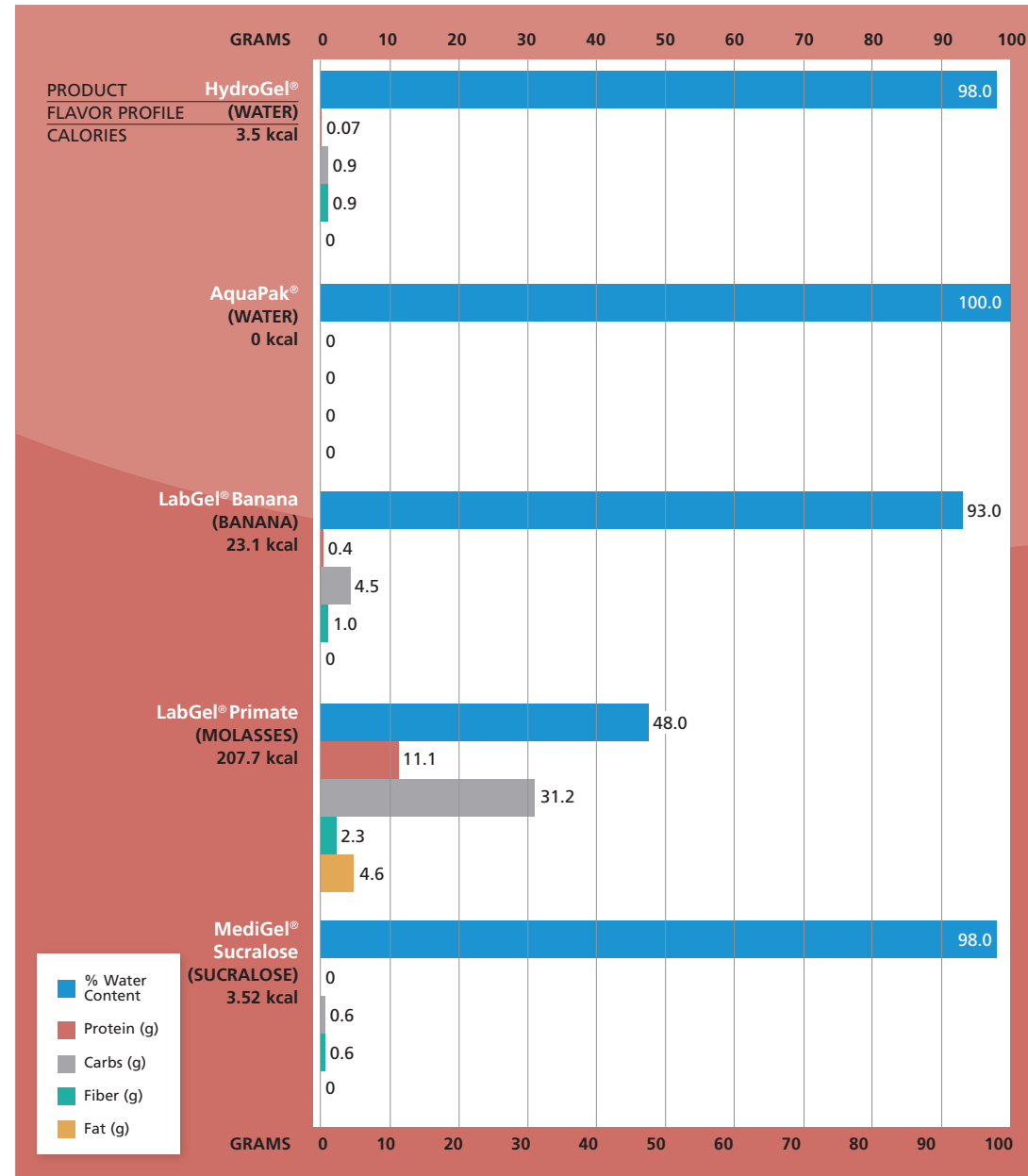
DietGel® for Rodents Nutritional Comparison

DietGel nutritional information for 100g







Hydration & Medication Delivery Products Nutritional Comparison

DietGel nutritional information for 100g



Medication Delivery Product Selection Guide

				
MIXING				
THERMOREVERSIBLE	✓	✓		✓
HAND MIX	✓		✓	
NUTRITION				
HYDRATION ONLY	✓			
HYDRATION & ELECTROLYTES		✓		✓
NUTRITION & HYDRATION			✓	
DRUG PROPERTIES				
WATER SOLUBLE DRUGS	✓	✓		✓
FAT SOLUBLE DRUGS			✓	
LOW BITTERNESS MASKING	✓	✓		✓
HIGH BITTERNESS MASKING			✓	

Thermoreversible Mixing Guidelines

ClearH ₂ O Product	WATER BATH		MIXING		RE-GELLING
	Temperature	Liquification Time	Hand Shaking	Vortexing	Cooling Time @ RT
MediGel® Sucralose	60° C	15 minutes	15 seconds	15 seconds	15 minutes
DietGel® Recovery	60° C	15 minutes	15 seconds	15 seconds	15 minutes
LabGel®	60° C	15 minutes	15 seconds	15 seconds	15 minutes

Frequently Asked Questions

HYDROGEL®

What does Barrier Packed mean?

Barrier Packed products contain cups or pouches inside of a medical grade Tyvek® bag. This saves labor by eliminating the need to wash individual cups or pouches when transferring into a clean room or biosecurity facility.

How are ClearH₂O gels sterilized?

ClearH₂O gel products are manufactured at high temperatures (up to 190°F or 87°C). All 2 oz. cup products are then wrapped in Tyvek® medical packaging and boxed before being E-beam irradiated at 5kGy. Verification of commercial sterility occurs with each lot of product being tested by an independent laboratory for microbiological analysis and documented on Certificates of Analysis, which are available online.

Why are gel products a good choice for research animals?

Unlike water bottles and mash diets, gels provide a consistent amount of hydration, nutrition and medication delivery without wetting the animal. While particularly useful when transporting animals, HydroGel® is also a great choice for recovering animals and special needs animals who require consistent, easy-to-consume hydration support.

Can you provide an MSDS for ClearH₂O products?

ClearH₂O products are not considered hazardous chemicals under the US Department of Labor, Occupational Safety and Health Communication Standard (29CFR 1910.1200). These products are under the umbrella of MSDS Exemption Reference for Food Manufacturers section 1910.1200(b)(5)(iii). Accordingly, Material Safety Data Sheets are not required or necessary for these products.

How much HydroGel® do I need to supply for an animal during shipment?

The amount of HydroGel® required is dependent on the species of animal, the number of days in transit, and the number of animals. Daily water consumption differs by animal. Please note many factors such as ambient temperature, animal weight and environmental conditions impact the daily water consumption. The suggested values listed below are average daily water consumption guidelines for animals during shipment. HydroGel™ is 98% pure water; therefore, the gel consumption is equivalent to water consumption.

- Mouse: 4 - 7g
- Guinea Pig: 50 - 80g
- Rat: 24 - 20g
- Rabbit: 100 - 600g

What is the best way to store HydroGel® products?

Unopened HydroGel® can be stored at room temperature and does not require special handling. Shelf life for unopened HydroGel® is 24 months from date of manufacture.

Once opened, provided the gel has not been contaminated, ClearH₂O products can be stored either at room temperature or at 4°C in a sealed bag/container to prevent the product from drying out for approximately 2 weeks.

DIETGEL®

When should I use DietGels®?

DietGel® products are soft gel dietary supplement formulations with carbohydrate, fat, protein, and fortified with a mineral and vitamin mix (with the exception of DietGel® Recovery, which only contains mineral mix). They are a superior alternative to mash diets, that can be used as the sole source of nutrition for up to 7 days, reducing time and labor costs. However, customers have used the product as a sole source of nutrition for up to 3 months with no issues. Please consult with your nutritionist for

Frequently Asked Questions

long-term use. DietGel® products are designed to provide compromised rodents a palatable source of hydration and energy and are an excellent solution for supplemental hydration for:

- Breeding and weaning of pups
- Post-surgical support
- Neurologically compromised rodents
- EAE models, Transgenic Mice
- Aging rodents
- Cancer models
- Shipping

What is the best way to store DietGel® products?

Unopened DietGel® can be stored at room temperature and does not require special handling. Shelf life for unopened DietGel® is 24 months. (Boost and GEM: 18 months)

Once opened, provided the gel has not been contaminated, ClearH₂O products can be stored either at room temperature or at 4°C in a sealed bag/container to prevent the product from drying out for approximately 2 weeks.

What is the difference between DietGel 76A (w/animal protein) and DietGel 76A (w/wheat protein)?

DietGel® 76A (w/animal protein) contains casein as the source of protein, while DietGel® 76A (w/wheat protein) contains a vegetarian source of protein. There are some slight changes in nutritional values, and a different flavor profile that can make all the difference for your animals.

Why does DietGel® sometimes have white or brown specs?

Non-soluble ingredients are sometimes visible in DietGel®, showing up as white to brown specs or clumps. The non-soluble ingredients do not affect the nutritional integrity of the product, making it 100% safe to use for your research animals.

What is the white foam on top of the gel?

It is rare but normal to see white particulate on top of the product. During the production process, foam can form from the mixture and interaction of all the ingredients and rise to the top of the gel. The foam, which contains ingredients such as casein or sugar, can dry out, exposing casein or sugar crystals, and form a white, crystal like residue layer that can be mistaken as mold. It's completely safe for the animals and poses no health risk.

Why does the color of DietGel® vary from case to case?

Color variation occurs during our sterilization process. When DietGel® products are produced, the color is a milky white. The product is then sterilized. The irradiation process changes the product color from a milky white to a caramel color. Product position within the sterilization chamber results in color variation. All DietGel® product is 100% sterile and safe to use, regardless of color variation.

Can I use DietGel® Recovery for support during shipments?

DietGel® Recovery is an excellent choice as a hydration source when shipping mice and rats. Many facilities have successfully used DietGel® Recovery during transport of rodents who arrive dry, healthy and require less time to acclimate. DietGel® Recovery is sterile purified water gel containing 70% moisture. It is fortified with calories and minerals and provides 120 kcals/100 grams.

When shipping guinea pigs we recommend using HydroGel®. In a recent study conducted by Charles River Laboratories, consumption and weight loss of guinea pigs during transit was significantly better with HydroGel® compared to a sweetened gel. The study showed that animals consumed more HydroGel®, therefore preventing body weight loss and decreasing clinical pathologic indicators of dehydration.

Frequently Asked Questions

What if my rats eat the plastic cup?

ClearH₂O cups comply with FDA regulations for food contact and do not contain heavy metals, chemicals or known allergens. The plastic is non-toxic and BPA free and harmless to the animal if it is consumed or chewed.

MEDIGEL®

How do I add medications to MediGel® Sucralose?

Thermoreversible Protocol

MediGel® Sucralose, like many ClearH₂O gels, is thermoreversible; the gel will liquefy when placed in a hot water bath. We recommend liquefying MediGel® Sucralose by placing the 2 oz. cup in a 60°C water bath for 15 minutes. Once the gel is liquefied, following aseptic technique, inject the medication with a syringe through the foil lid. After the medication is added, place a sticker over the injection site and shake the cup vigorously by hand for 15 seconds, then mix by vortexing for an additional 15 seconds. After mixing the medication, let the gel re-solidify back to its original consistency at room temperature or place in the refrigerator to accelerate re-solidification. (Approximately 15 minutes)

This same procedure can be followed for other ClearH₂O products such as DietGel® Recovery, DietGel® 76A, and LabGel®. See page 39 for *thermoreversible mixing guidelines*.

Hand Mixing Protocol

Alternatively, you can add medications to MediGel® Sucralose by removing the foil lid and hand-mixing the drug directly into the gel.

One trick to ensure that the medication is mixed evenly into the gel is to add a natural food coloring with the medication solution. This enables a visual confirmation of the mixing.

How do I calculate the medication dosage for using MediGel® Sucralose?

To answer this question, it is best to use an example calculation. In this calculation, we are using a drug concentration of 10mg/kg/day for pain management.

For a 25 gram mouse: 10 mg/kg X 0.025 kg = 0.25 mg of drug/mouse/day.

A 25 gram mouse on average will consume 5 ml of gel per day.

Therefore, 0.25 mg / 5 ml gel = 0.05 mg/ml.

One 2 oz cup of gel contains 60 ml.

Therefore, 0.05 mg X 60ml = 3 mg per cup

You would want to add 3 mg of drug to one cup of either MediGel® Sucralose.

NOTES

1. One cup of gel medicates & hydrates up to 5 mice for 2 days.
2. Provide medicated gel 48 hours prior to surgery.
3. If using a liquid drug suspension, it is best if the volume of drug suspension added to the MediGel® is under 5 mls. Too much volume may prevent the gel from re-solidifying.
4. If using a liquid drug suspension, you can add some food coloring to the suspension to help with determining how well the solution is mixed.

What is the best way to store MediGel® Sucralose?

Unopened MediGel® Sucralose can be stored at room temperature and does not require special handling. Shelf life for unopened MediGel® Sucralose is 24 months.

Once opened, provided the gel has not been contaminated, ClearH₂O products can be stored either at room temperature or at 4°C in a sealed

Frequently Asked Questions

bag/container to prevent the product from drying out for approximately 2 weeks

LABGEL®

How to use LabGel®?

LabGel® is a hydration source that can be used for non-human primates. LabGel® Banana is 92% water, and can be used as a water source, during transportation or as supplemental hydration. LabGel® Primate is 47% water.

Thermoreversibility is a unique attribute of ClearH₂O gel products. When heated to its fluid form, it can easily be poured into an enrichment device. Oral medications may also be administered by adding them to the gel in its liquid form. When heated, the gels transform into a semi-liquid, and when cooled to room temperature, they revert back to their original gel state.

We recommend heating unopened pouches in a hot water bath until the gel reaches melting temperature and becomes fluid. (Approximately 60°C) Caution should be used in handling gels after heating to prevent burns. Once the medication is added to the liquefied gel, we recommend transferring to a container with a large surface base to facilitate heat transfer and to minimize the amount of time that the drug may be exposed to elevated temperatures. Refrigeration may be used to shorten the time it takes for the gel to return to its semi-solid state.

What is the best way to store LabGel® products?

Unopened LabGel products are designed to be stored at room temperature and do not require special handling. Typical shelf life for unopened LabGel® products is 18 months.

FIBERBITES®

What is the recommended dosage for FiberBites®?

FiberBites® provide an easy to administer, readily accepted source of fiber for nonhuman primates (NHPs). Each bite contains approximately 2 grams of inulin, a prebiotic fiber source that promotes a healthy gastrointestinal tract.

The general recommend daily dose of fiber in NHPs is 1.5 to 2 grams per kg per day. Assuming the primate weighs 8 kilos – it requires 12 to 16 grams of fiber per day. To convert grams of fiber needed to the proper number of FiberBites®, divide the daily fiber dose by 2 grams.

For example, 12 to 16 grams of fiber daily equals 6-8 FiberBites®; we would recommend starting with 3 pieces twice a day and increasing to 4 twice daily depending upon your results.

Trademarks

The following are registered trademarks of ClearH₂O... **AquaBeads®**, **AquaDrop®**, **AquaGel®**, **AquaPak®**, **CritiCare®**, **DietDrop®**, **DietGel®**, **FiberBites®**, **GelDrop®**, **HydroDrop®**, **HydroGel®**, **LabGel®**, **MediGel®**, **MediDrop®**, **Nutri-Paste®**, **TransGel®**, **VetGel®**, **VitaBites®**, **WaterBite®**

ClearH₂O[®]

Blending food technology with life science for **clearly better** products.

COMPANY INFORMATION

ClearH₂O[®] is committed to advancing animal research and agriculture with more effective and ethical hydration, nutrition, and medication delivery solutions utilizing our proprietary gel technology. Made in our FDA approved facility, ClearH₂O[®] products are formulated with purified ingredients and highly palatable to optimize consumption. The ready to use, convenient product format with long-dated, room temperature shelf stability helps animal researchers and producers improve the health and welfare of their animals while optimizing research and productivity outcomes.

www.clearh2o.com 1-888-493-7645

85 Bradley Drive, Westbrook, ME 04092 1-888-HYDROGL (1-888-493-7645) Fax: 1-207-221-8905